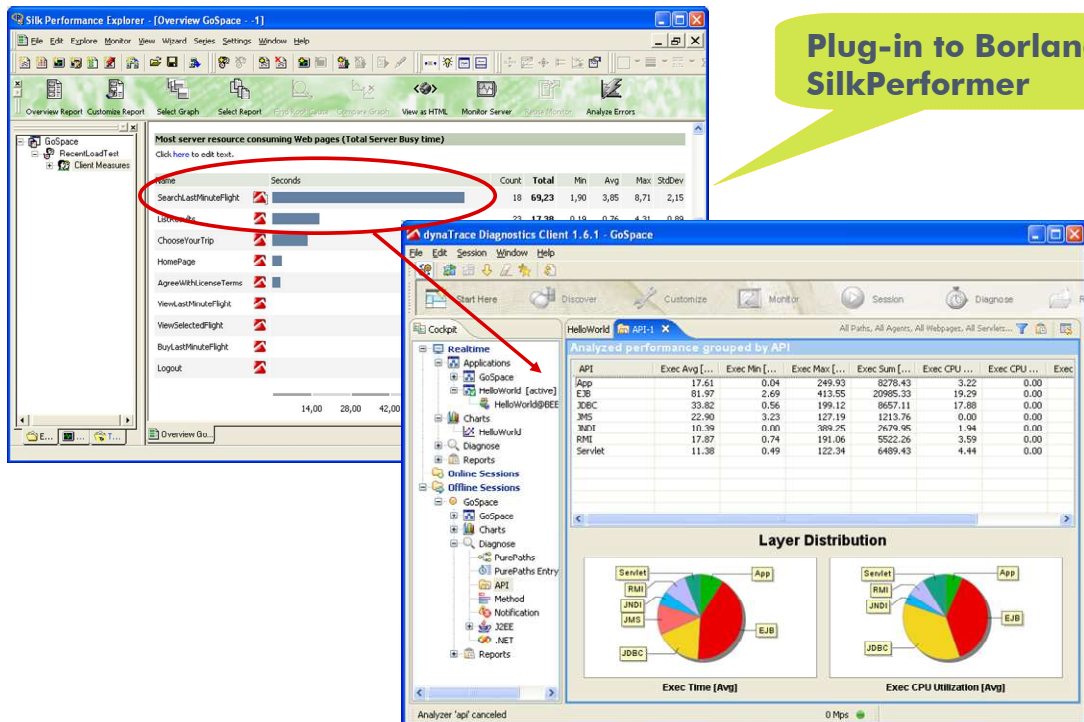




## Diagnose Performance Problems in distributed Java and .NET Applications under Load **dynaTrace Diagnostics™ for Borland SilkPerformer**

dynaTrace software offer breakthrough solution for performance diagnostics of distributed heterogeneous Java/J2EE and .NET applications under load. Performance degradation and stability problems in mission-critical applications can have a negative impact on your business processes. Historically, it was nearly impossible to track down the causes of such issues; and once identified, such issues required time-consuming and costly procedures for diagnosis and repair. dynaTrace Diagnostics™ diagnoses performance degradation and stability problems in distributed heterogeneous J2SE/J2EE and .NET applications using new, innovative technologies.



*SilkPerformer drill-down into dynaTrace Diagnostics*

dynaTrace Diagnostics™ enables you to look deeply into the inner workings of applications under load in real-time, enabling you to:

- **Interactively diagnose** applications in production and during testing
- **Activate drill down** sensors on-the-fly
- **Detect** issues at component, object and method levels
- **Identify** correlations between processes,
- **Reconstruct** issues without having to reproduce them, and
- **Pinpoint down** the root causes of problems.

All with negligible impact on the performance of the application.

Performance degradation and stability problems Bottlenecks can now be remedied eliminated efficiently, with a minimum of effort - ensuring that your users are satisfied with the performance and reliability of your enterprise applications.

dynaTrace software's solution is used by performance analysts, software developers, QA engineers and IT service providers. The deployment of dynaTrace helps its Diagnostics customers diagnosis software enables companies to complete software projects on time, reduce costly downtime and enhance improve their customers' satisfaction.

dynaTrace Diagnostics™ provides in-depth Java/J2EE and .NET application performance diagnostics deeper than down to the code level. The dynaTrace Diagnostics Plug-in to SilkPerformer and SilkCentral Performance Manager allows to correlate Web Page, HTTP Requests and Web Service calls with dynaTrace PurePath™ information for performance bottleneck root-cause diagnostics.

**KEY BENEFITS**

- **Plug-in to load testing**
- **Plugs seamless to SilkPerformer**
- **Scalability** for load testing
- **Diagnose applications in production and during testing**
- **Over multiple JVM and .NET processes**
- **Java SE/EE and .NET support in one tool**
- **World's first True End-to-End break-down, including Visual True-Log of Web Page**

*World's first True End-to-End break-down, including Visual True-Log of Web Page*

**Specification**

**SUPPORTED APPLICATION ENVIRONMENTS**

**Operating Systems**

- Windows, Linux, zLinux, AIX , Solaris

**Application Servers**

- IBM WebSphere, BEA WebLogic, Oracle AS, JBoss, Tomcat, SAP NetWeaver J2EE, Microsoft Windows 2003 AS<sup>1)</sup>

**Application Platforms**

- J2SE 5.0, J2SE 1.4, J2EE 5.0, J2EE 1.4, J2EE 1.3, .NET 1.1<sup>1)</sup>, .NET 2.0<sup>1)</sup>

**Java Virtual Machine Vendors**

- Sun JVM 32-/64-bit, IBM JVM 31-/32-/64-bit, BEA JRockit

**Extended Technology Support**

- RMI/JRMP, RMI/IIOP, JMS, JNDI
- Servlets, JSP, Struts, JSF
- Web Services
- EJB2, EJB3, JCA, CCI, Spring, JTA
- JDBC, Hibernate, OJB, JDO, TopLink
- JDK Logger, Log4J
- Memory Leak Diagnostics
- Thread and Synchronization Diagnostics

- Exception Diagnostics
- ADO.Net<sup>1)</sup>, ASP.Net<sup>1)</sup>

**SYSTEM REQUIREMENTS**

**Diagnostics Server**

- Windows, Linux, Solaris<sup>1)</sup>
- 1GB disk space, 1GB memory

**Diagnostics Client and Remote Diagnostics Client**

- Windows, Linux IA32 GTK
- 100MB disk space
- 512MB memory