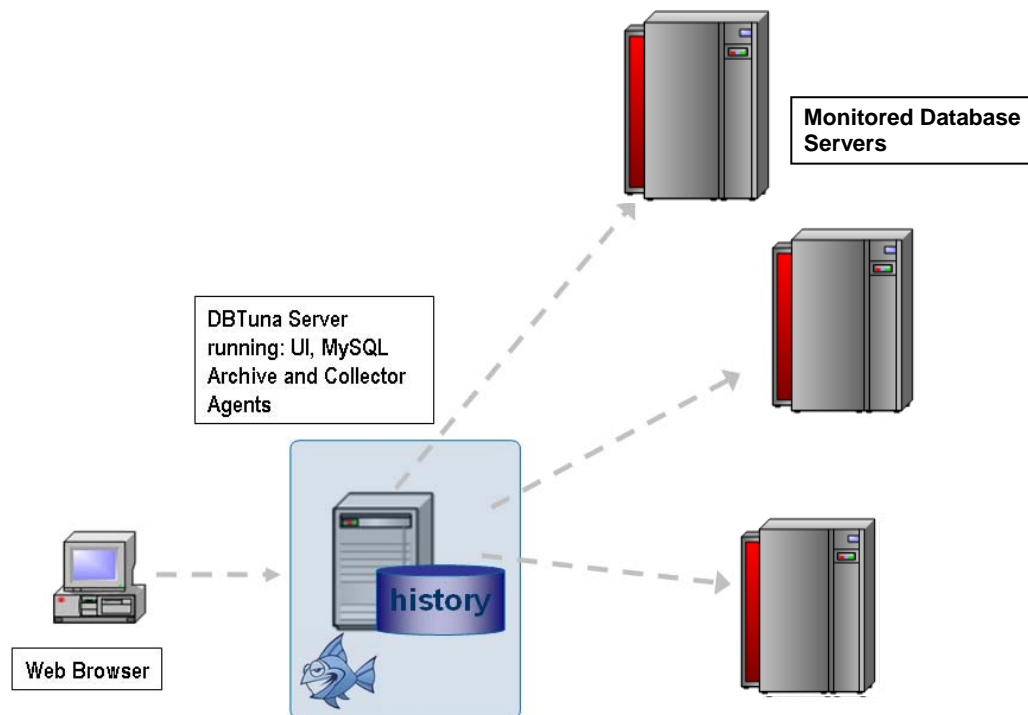


## **DBTuna Quick Start Guide for Linux and Solaris**

**Version 1.6.x**

# Architecture



DBTuna has 3 components which reside on the same machine:

- Web User Interface
- Data Repository
- Agent Collector

Installation of DBTuna is available on Windows or Unix/Linux. To install on Unix/Linux you need to uncompress and then extract the tar.gz file to an appropriate installation directory.

E.g. to install on Linux, copy the tar.gz file to the installation directory, then run:

```
tar -xfz dbtuna-1.6.0-Linux.tar.gz
```

E.g. to install on Solaris, copy the tar.gz file to the installation directory, then run:

```
gunzip -c dbtuna-1.6.0-Solaris.tar.gz | tar -xf -
```

# Starting and Stopping the DBTuna Processes

## Starting and Stopping on Linux/Unix

The dbtuna start and stop scripts are located in the root of the installation directory.

N.B. The start and stop scripts must be executed from the same directory.

### Starting

e.g.

```
$ ./startDBTuna.sh
DBTuna Starting.....
```

The start script will only display a message of “DBTuna Starting.....”, and then return control to the command prompt.

To check for the status of the processes the showStatus.sh script can be run.

e.g.

```
$ ./showStatus.sh

----- DBTuna Status -----
-----
DBTuna Web GUI             RUNNING
DBTuna Repository         RUNNING
```

### Stopping

e.g.

```
$ ./stopDBTuna.sh
DBTuna Stopping.....
```

The stop script will only display a message of “DBTuna Stopping”, and then return control to the command prompt.

Again, the status can be checked with showStatus.sh.

e.g.

```
$ ./showStatus.sh

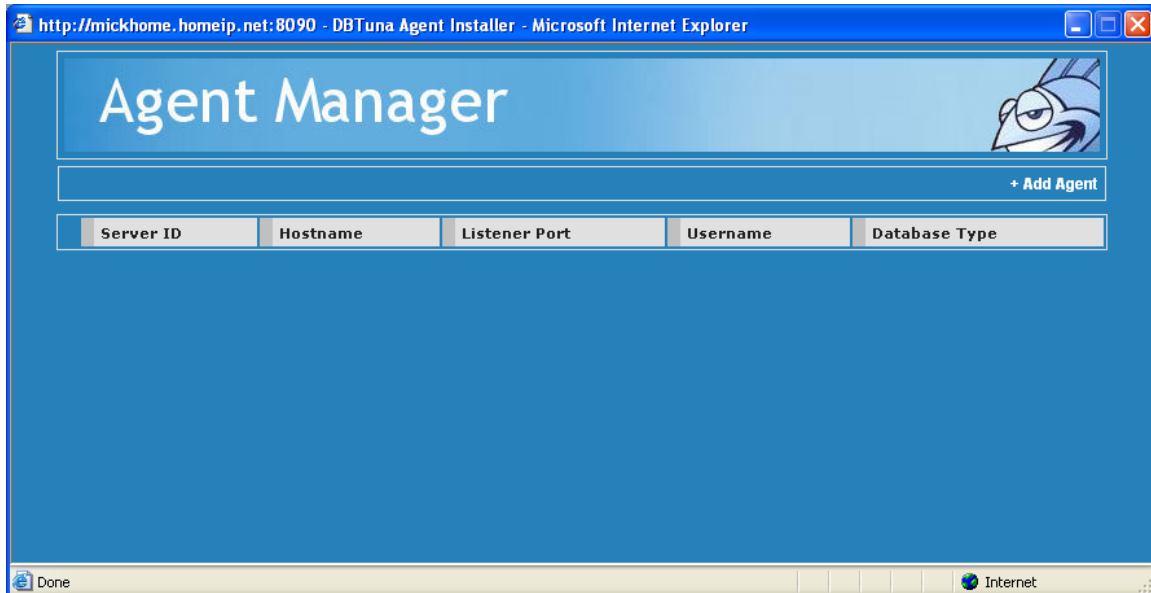
----- DBTuna Status -----
-----
DBTuna Web GUI             STOPPED
DBTuna Repository         STOPPED
```

## Creating and Running DBTuna Agents

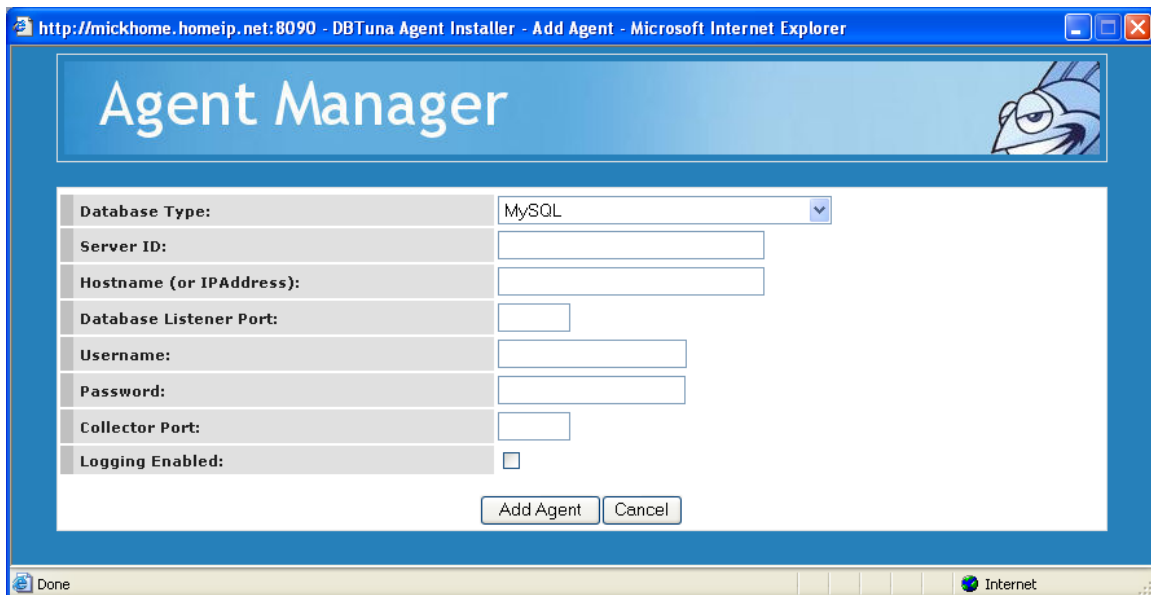
DBTuna agents are the processes which collect and archive performance information from a monitored database.

### Creating the Agent

The DBTuna agent is created via the web based GUI. To do this simply browse to the DBTuna GUI Activity Page and select the “**Admin**” link at the top right of the page, this then displays the Agent Manager in a separate window.



Agents can then be created on the Add Agent page (link on top right of Agent Manager Page).



The following details are required in order to create an Agent:

1. **Database Type:** this is the database you wish to monitor
2. **Server ID:** this an identifier you wish to give to the monitored database.

3. **Hostname (or IPAddress):** the hostname or IP of the monitored database.
4. **Database Listener Port:** the TCP listen port used by the monitored database (e.g. 3306 is the default listen port for MySQL, 1433 is the default listen port for Microsoft SQL Server).
5. **Username:** the database username for user that the DBTuna agent will run as.
6. **Password:** the database password for the user that the DBTuna agent will run as.
7. **Collector Port:** this is a dedicated TCP port used by the DBTuna agent collector. For ease of deployment it is recommended to use 8092+ for the DBTuna agents.
8. **Logging Enabled:** Check this option only if you wish DBTuna to create debug logs in order to troubleshoot issues with the agent.

## Starting and Stopping Agents

Agents are started from the **[Installation Dir]\agent** directory.

### Starting

There are start scripts for each supported database e.g. startMySQLAgent(.sh/bat), startSQLServerAgent(.sh/bat) etc. These scripts take the ServerID of the agent as an argument:

e.g. to start an agent called MySQL-Prod on Linux/Unix run:

```
startMySQLAgent.sh MySQL-Prod
```

A valid DBTuna license must be included in the agent directory in a file called **dbtuna.key**. To receive a key, please contact your DBTuna software distributor.